

電氣特性 / PERFORMANCE DATA

全閉外扇型，F 級絕緣，連續額定，服務係數 S.F.1.15，周溫 40°C，220V/380V，60Hz
Totally Enclosed Fan Cooled, Squirrel Cage 3-phase 60Hz, Meet CNS 14400-2012 IE3 Efficiency

| 輸出 OUTPUT | 馬力 HP | 仟瓦 kW | 極數 POLE | 框號 FRAME NO. | 滿載轉速 FULL LOAD RPM | 電流 CURRENT (A) | | | 轉矩 TORQUE | | | 效率 EFFICIENCY (%) | | | 功率因數 POWER FACTOR (%) | | |
|--------------|----------|----------|------------|--------------------|-----------------------------|----------------------|----------------------|----------------------|---------------------|--------------------------|------------------------|----------------------|-------------------|-------------------|--------------------------|-------------------|-------------------|
| | | | | | | 滿載 F.L.A. 380V | 滿載 F.L.A. 220V | 起動 L.R.C. 220V | 滿載 F/L (kg-m) | 起動 LOCKED ROTOR(%) | 最大 BREAK DOWN(%) | 滿載 100% LOAD | 負載 75% LOAD | 負載 50% LOAD | 滿載 100% LOAD | 負載 75% LOAD | 負載 50% LOAD |
| 1 | 0.75 | 2 | 80M | 3475 | 1.7 | 3.0 | 29 | 0.21 | 400 | 430 | 83.0 | 82.3 | 79.1 | 79.0 | 70.5 | 57.5 | |
| | 0.75 | 4 | 80M | 1735 | 1.9 | 3.2 | 30 | 0.42 | 430 | 460 | 85.5 | 84.2 | 80.0 | 71.0 | 61.5 | 48.5 | |
| | 0.75 | 6 | 90L | 1145 | 2.2 | 3.8 | 21 | 0.64 | 260 | 300 | 82.5 | 82.7 | 80.3 | 63.5 | 54.0 | 41.5 | |
| 2 | 1.5 | 2 | 90L | 3465 | 3.0 | 5.2 | 44 | 0.42 | 360 | 370 | 85.5 | 86.1 | 85.0 | 89.0 | 85.5 | 78.0 | |
| | 1.5 | 4 | 90L | 1725 | 3.5 | 6.0 | 42 | 0.85 | 320 | 350 | 86.5 | 87.0 | 85.8 | 76.0 | 69.5 | 57.0 | |
| | 1.5 | 6 | 112M | 1145 | 3.4 | 5.8 | 34 | 1.28 | 240 | 270 | 88.5 | 89.1 | 88.8 | 76.5 | 69.5 | 59.0 | |
| 3 | 2.2 | 2 | 90L | 3475 | 4.4 | 7.6 | 70 | 0.62 | 310 | 260 | 86.5 | 87.2 | 86.5 | 87.5 | 83.0 | 73.0 | |
| | 2.2 | 4 | 100L | 1740 | 4.6 | 8.0 | 76 | 1.23 | 310 | 330 | 89.5 | 89.9 | 88.7 | 81.0 | 75.0 | 63.0 | |
| | 2.2 | 6 | 112M | 1165 | 5.5 | 9.5 | 67 | 1.84 | 220 | 240 | 89.5 | 89.7 | 88.2 | 68.0 | 60.5 | 48.0 | |
| 5 | 3.7 | 2 | 112M | 3515 | 7.1 | 12 | 112 | 1.03 | 280 | 370 | 88.5 | 88.7 | 87.7 | 89.0 | 85.5 | 78.5 | |
| | 3.7 | 4 | 112M | 1760 | 8.1 | 14 | 127 | 2.05 | 290 | 310 | 89.5 | 89.4 | 88.1 | 77.5 | 70.5 | 58.0 | |
| | 3.7 | 6 | 132S | 1170 | 8.2 | 14 | 95 | 3.08 | 200 | 310 | 89.5 | 89.7 | 88.4 | 76.5 | 70.5 | 59.0 | |
| 7.5 | 5.5 | 2 | 132S | 3515 | 11 | 18 | 135 | 1.52 | 240 | 280 | 89.5 | 90.1 | 89.5 | 87.5 | 86.5 | 82.0 | |
| | 5.5 | 4 | 132S | 1765 | 11 | 19 | 142 | 3.04 | 280 | 300 | 91.7 | 91.5 | 89.9 | 81.0 | 76.5 | 66.5 | |
| | 5.5 | 6 | 132M | 1165 | 12 | 20 | 147 | 4.60 | 240 | 290 | 91.0 | 91.5 | 90.9 | 77.5 | 71.5 | 60.0 | |
| 10 | 7.5 | 2 | 132S | 3515 | 15 | 25 | 183 | 2.08 | 260 | 270 | 90.2 | 91.0 | 90.7 | 87.0 | 85.5 | 80.0 | |
| | 7.5 | 4 | 132M | 1765 | 15 | 27 | 199 | 4.14 | 290 | 300 | 91.7 | 91.7 | 90.7 | 80.5 | 76.0 | 65.5 | |
| | 7.5 | 6 | 160M | 1170 | 16 | 27 | 139 | 6.24 | 220 | 240 | 91.0 | 91.7 | 91.5 | 79.0 | 75.0 | 66.0 | |
| 15 | 11 | 2 | 160M | 3535 | 20 | 35 | 266 | 3.03 | 230 | 320 | 91.0 | 91.2 | 90.1 | 91.0 | 89.5 | 86.0 | |
| | 11 | 4 | 160M | 1770 | 22 | 38 | 320 | 6.05 | 270 | 280 | 92.4 | 92.6 | 91.7 | 82.5 | 79.0 | 70.5 | |
| | 11 | 6 | 160L | 1170 | 23 | 40 | 238 | 9.16 | 240 | 270 | 91.7 | 92.4 | 92.1 | 79.0 | 74.0 | 64.0 | |
| 20 | 15 | 2 | 160M | 3530 | 28 | 48 | 340 | 4.14 | 210 | 310 | 91.0 | 91.5 | 91.1 | 90.0 | 89.0 | 85.5 | |
| | 15 | 4 | 160L | 1765 | 30 | 51 | 342 | 8.28 | 260 | 290 | 93.0 | 93.5 | 93.2 | 83.0 | 79.0 | 70.5 | |
| | 15 | 6 | 180M | 1175 | 31 | 54 | 330 | 12.4 | 210 | 260 | 91.7 | 92.7 | 92.6 | 80.0 | 75.5 | 64.5 | |
| 25 | 18.5 | 2 | 160L | 3550 | 34 | 59 | 581 | 5.08 | 240 | 260 | 92.0 | 92.0 | 91.3 | 89.5 | 87.0 | 81.0 | |
| | 18.5 | 4 | 180M | 1775 | 37 | 64 | 417 | 10.2 | 250 | 260 | 93.6 | 93.9 | 93.4 | 81.5 | 78.0 | 69.5 | |
| | 18.5 | 6 | 180L | 1180 | 37 | 64 | 485 | 15.3 | 220 | 260 | 93.0 | 93.4 | 92.9 | 81.0 | 75.5 | 65.0 | |
| 30 | 22 | 2 | 180M | 3545 | 41 | 71 | 557 | 6.04 | 220 | 280 | 92.0 | 92.1 | 91.3 | 88.5 | 88.0 | 84.5 | |
| | 22 | 4 | 180M | 1770 | 43 | 74 | 433 | 12.1 | 220 | 230 | 93.6 | 94.3 | 94.3 | 83.0 | 81.0 | 74.5 | |
| | 22 | 6 | 180L | 1175 | 44 | 76 | 527 | 18.2 | 210 | 280 | 93.0 | 93.6 | 93.3 | 81.5 | 76.5 | 66.5 | |
| 40 | 30 | 2 | 180L | 3540 | 55 | 95 | 566 | 8.25 | 200 | 290 | 92.7 | 93.2 | 92.9 | 89.0 | 88.5 | 85.5 | |
| | 30 | 4 | 180L | 1770 | 60 | 103 | 615 | 16.5 | 210 | 240 | 94.1 | 94.7 | 94.5 | 81.0 | 78.0 | 70.0 | |
| | 30 | 6 | 200L | 1185 | 61 | 106 | 725 | 24.7 | 310 | 280 | 94.1 | 94.4 | 93.9 | 79.0 | 74.0 | 63.0 | |
| 50 | 37 | 2 | 200L | 3550 | 68 | 118 | 840 | 10.2 | 180 | 310 | 93.0 | 93.2 | 92.6 | 88.5 | 87.0 | 82.0 | |
| | 37 | 4 | 200L | 1775 | 71 | 123 | 949 | 20.3 | 270 | 280 | 94.5 | 94.9 | 94.5 | 83.5 | 80.0 | 71.5 | |
| | 37 | 6 | 200L | 1185 | 73 | 127 | 858 | 30.4 | 280 | 290 | 94.1 | 94.5 | 94.2 | 81.5 | 77.0 | 67.0 | |
| 60 | 45 | 2 | 200L | 3550 | 82 | 141 | 1013 | 12.3 | 180 | 290 | 93.6 | 94.0 | 93.8 | 89.5 | 88.5 | 85.5 | |
| | 45 | 4 | 200L | 1775 | 86 | 148 | 1005 | 24.7 | 190 | 260 | 95.0 | 95.4 | 95.1 | 84.0 | 81.5 | 74.0 | |
| | 45 | 6 | 225S | 1185 | 92 | 159 | 865 | 37.0 | 230 | 210 | 94.5 | 95.0 | 94.9 | 78.5 | 75.0 | 66.5 | |
| 75 | 55 | 2 | 225S | 3575 | 99 | 171 | 1553 | 15.0 | 220 | 320 | 93.6 | 93.7 | 93.0 | 90.0 | 88.5 | 83.0 | |
| | 55 | 4 | 225S | 1790 | 108 | 187 | 1585 | 29.9 | 270 | 300 | 95.4 | 95.5 | 94.9 | 81.0 | 76.5 | 66.5 | |
| | 55 | 6 | 250S | 1185 | 113 | 195 | 1165 | 45.2 | 210 | 250 | 94.5 | 94.8 | 94.3 | 78.5 | 74.5 | 65.5 | |
| 100 | 75 | 2 | 250S | 3575 | 134 | 231 | 1761 | 20.4 | 170 | 280 | 94.1 | 93.9 | 92.9 | 90.5 | 89.5 | 85.5 | |
| | 75 | 4 | 250S | 1785 | 137 | 236 | 1882 | 40.9 | 220 | 260 | 95.4 | 95.6 | 95.3 | 87.5 | 85.5 | 79.5 | |
| | 75 | 6 | 250M | 1185 | 152 | 262 | 1376 | 61.6 | 190 | 200 | 95.0 | 95.4 | 95.3 | 79.0 | 76.0 | 67.5 | |
| 125 | 90 | 2 | 250M | 3580 | 161 | 278 | 2183 | 24.5 | 170 | 230 | 95.0 | 94.9 | 94.2 | 89.5 | 87.5 | 82.0 | |
| | 90 | 4 | 250M | 1780 | 164 | 283 | 2238 | 49.2 | 230 | 270 | 95.4 | 95.7 | 95.6 | 87.5 | 85.0 | 79.0 | |
| | 90 | 6 | 280S | 1190 | 174 | 301 | 1957 | 73.7 | 190 | 240 | 95.0 | 95.4 | 95.0 | 82.5 | 79.0 | 70.0 | |
| 150 | 110 | 2 | 280S | 3580 | 202 | 349 | 2448 | 29.9 | 180 | 280 | 95.0 | 94.7 | 93.5 | 87.0 | 84.5 | 77.5 | |
| | 110 | 4 | 280S | 1785 | 210 | 363 | 2303 | 60.0 | 170 | 230 | 95.8 | 96.0 | 95.9 | 83.0 | 81.5 | 76.0 | |
| | 110 | 6 | 280M | 1190 | 218 | 377 | 2801 | 90.0 | 210 | 270 | 95.8 | 95.9 | 95.4 | 80.0 | 75.5 | 65.0 | |
| 175 | 132 | 2 | 280M | 3575 | 236 | 408 | 3347 | 36.0 | 220 | 290 | 95.4 | 95.3 | 94.5 | 89.0 | 87.0 | 82.0 | |
| | 132 | 4 | 280M | 1785 | 247 | 426 | 2945 | 72.0 | 200 | 230 | 96.2 | 96.3 | 95.9 | 84.5 | 84.0 | 80.0 | |
| | 132 | 6 | 315S | 1190 | 258 | 446 | 2836 | 108 | 170 | 240 | 95.8 | 95.9 | 95.4 | 81.0 | 77.5 | 69.0 | |
| 200 | 150 | 2 | 315S | 3575 | 263 | -- | *2467 | 40.9 | 260 | 310 | 95.4 | 95.6 | 95.2 | 91.0 | 90.0 | 87.0 | |
| | 150 | 4 | 315S | 1785 | 274 | -- | *2048 | 81.8 | 250 | 260 | 96.2 | 96.3 | 95.6 | 86.5 | 86.5 | 83.5 | |
| | 150 | 6 | 315MF | 1190 | 292 | -- | *1538 | 123 | 150 | 230 | 95.8 | 95.9 | 95.5 | 81.5 | 79.5 | 73.0 | |
| 250 | 185 | 2 | 315M | 3580 | 326 | -- | *2085 | 50.3 | 180 | 280 | 95.8 | 95.9 | 95.3 | 90.0 | 88.5 | 84.0 | |
| | 185 | 4 | 315M | 1785 | 340 | -- | *2840 | 101 | 220 | 290 | 96.2 | 96.4 | 96.2 | 86.0 | 84.0 | 80.5 | |
| | 185 | 6 | 315LS | 1190 | 360 | -- | *2554 | 151 | 190 | 250 | 95.8 | 96.0 | 95.6 | 81.5 | 79.5 | 72.5 | |
| 270 | 200 | 2 | 315LS | 3575 | 356 | -- | *2191 | 54.5 | 140 | 240 | 95.8 | 95.9 | 95.7 | 89.0 | 89.0 | 86.5 | |
| | 200 | 4 | 315LS | 1790 | 363 | -- | *2885 | 109 | 180 | 260 | 96.2 | 96.3 | 96.1 | 87.0 | 86.0 | 81.0 | |
| | 200 | 6 | 315LL | 1190 | 384 | -- | *2627 | 164 | 180 | 250 | 95.8 | 96.0 | 95.4 | 82.5 | 78.5 | 69.5 | |

Note: 1. 試驗方法依據 IEEE 112 測試法 B 種, CNS 10919。
2. 上述特性為標準值作參考用。
3. 最低效率值符合 CNS 14400-2012 IE3 要求。
4. 立式框號請參考立式馬達尺寸表。
5. 上述數值若有變更，恕不另行通知。
6. 200~375kW 可配合需求承製。
★此為 380V 之啟動電流。

1. Test method based on IEEE 112 method B, CNS 10919.
2. All data shown above are nominal values for reference only.
3. Min. efficiency in accordance with CNS 14400-2012 IE3.
4. For vertical motor frame size, please see the dimension table.
5. All data shown above is subject to change without prior notice.
6. Rating of 200~375kW is available on request.
★ This value is for 380V.

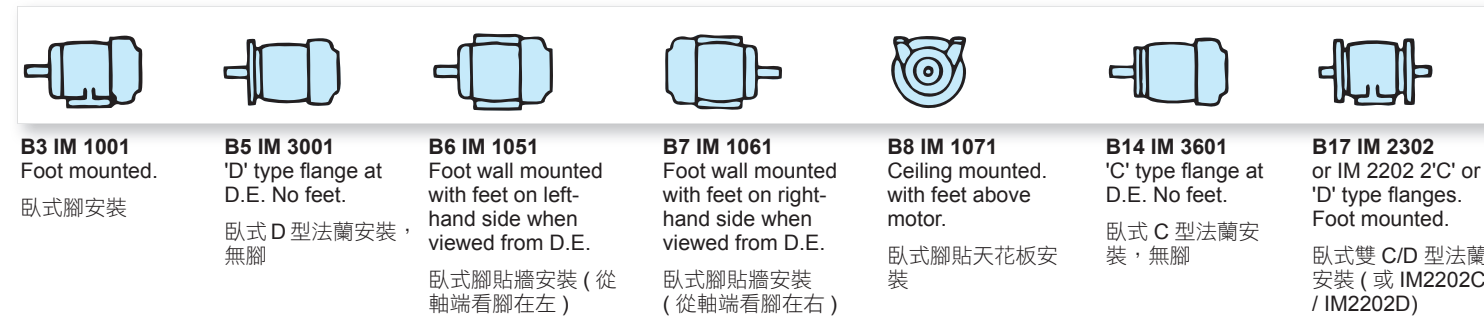
Technic No.:D147010

大同超高效率 IE3 系列馬達

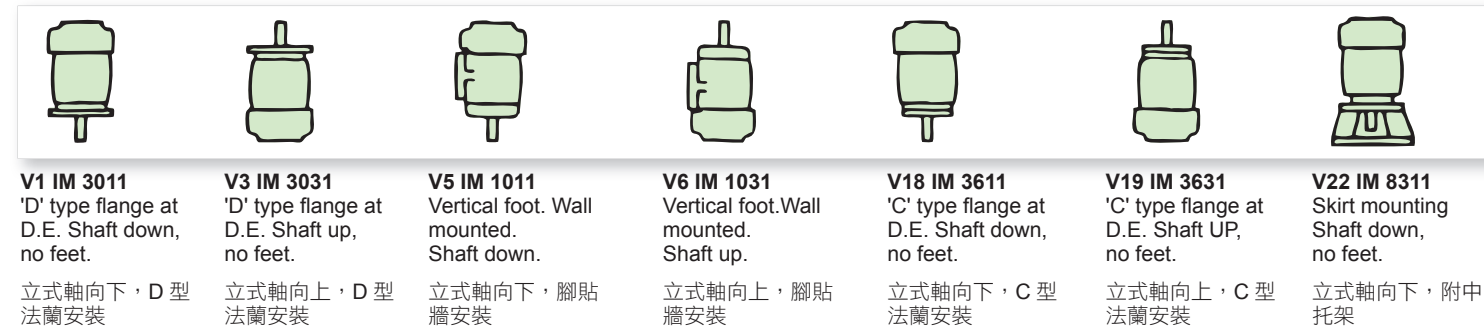
- 具國際互換性 – 採用 IEC (International Electrotechnical Commission) 制定之國際標準尺寸，具國際互換性。
- F 級絕緣材料 – 採用耐熱、耐濕、耐化學之 F 級絕緣材料，安全耐用壽命最長。
- 特性優異 – 由於轉部慣性小，加速轉矩大，起動、停止時間短，對於起動、停止頻繁之機器可提高其工作效率。
- 振動、噪音小 – 機械結構設計完美，加工與組立精良，且經精密之平衡，幾無振動與噪音。
- 保養方便 – Fr.225(含)以下，採用高級密封軸承，不須添換潤滑油脂，保養方便。
- 小型輕量 – 節省空間，搬運安裝容易，便於設計施工。

裝置方式 Mounting Arrangements

Horizontal Shaft



Vertical Shaft





馬達事業部 Motor Business Unit

新北市三峽區溪東路 352 號 TEL : (02) 8676-6888 (代表號)
352 Shi-tong Rd., Sanhsia, New Taipei City 23743, Taiwan, R.O.C.
Website: www.tatung.com

- 業務接洽、技術服務，敬請光臨
- 台北營業區
台北業務中心：台北市中山北路 3 段 22 號
電話：02-25925252 #3333, 2930, 2940 02-25984424
傳真：02-25936062
 - 新北市業務中心：新北市三峽區溪東路 352 號
電話：02-86761101~4
傳真：02-86761841
 - 羅東重電站：宜蘭縣冬山鄉梅林路 145 號
電話：03-9589481, 9580907
傳真：03-9589471
 - 中壢重電站：桃園縣平鎮市中豐路 1 段 18 號
電話：03-4584027-29
傳真：03-4576734
 - 台中重電站：台中市臺灣大道 4 段 1916 號
電話：04-23591262, 35005266
傳真：04-23593764
 - 嘉義重電站：嘉義市育人路 546 號
電話：05-2856431
傳真：05-2859244
 - 台南重電站：台南市永康區中正南路 502 號
電話：06-2532291, 2531856
傳真：06-2538196
 - 高雄重電站：高雄市忠孝一路 499 號
電話：07-2363121, 2363122
傳真：07-2362674

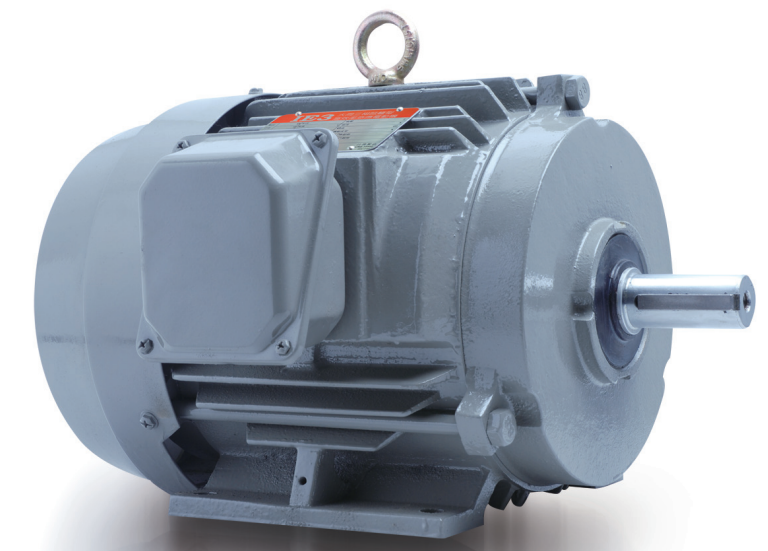


大同超高效率馬達

TATUNG PREMIUM EFFICIENCY INDUCTION MOTOR

符合 CNS14400-2012 IE3 國家標準

高效率 · 低噪音 · 低振動 · 超省電
美國商務部 (DOC) NVLAP 授證實驗室
全國認證 TAF 實驗室



IE3 系列

低壓/三相/鼠籠式/全密閉外扇型
感應電動機
LOW VOLTAGE/THREE PHASE/SQUIRREL
CAGE ROTOR

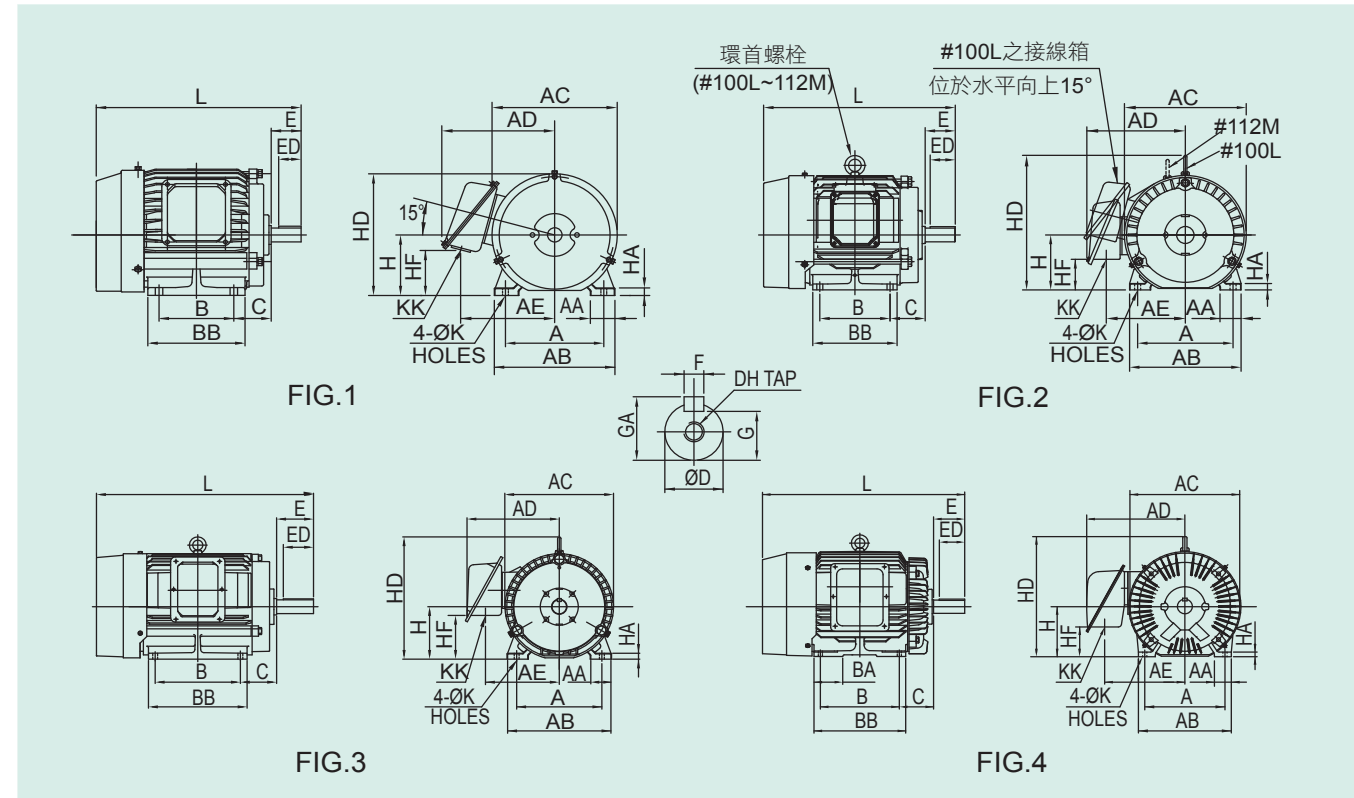
0.75 ~ 200 仟瓦
0.75 ~ 200 kW

框號 80M ~ 315LL
FRAME SIZE : 80M ~ 315LL

F 級絕緣
CLASS F INSULATION SYSTEM



IE3 系列外形尺寸圖
臥式全密閉外扇型 HORIZONTAL TOTALLY-ENCLOSED FAN-COOLED

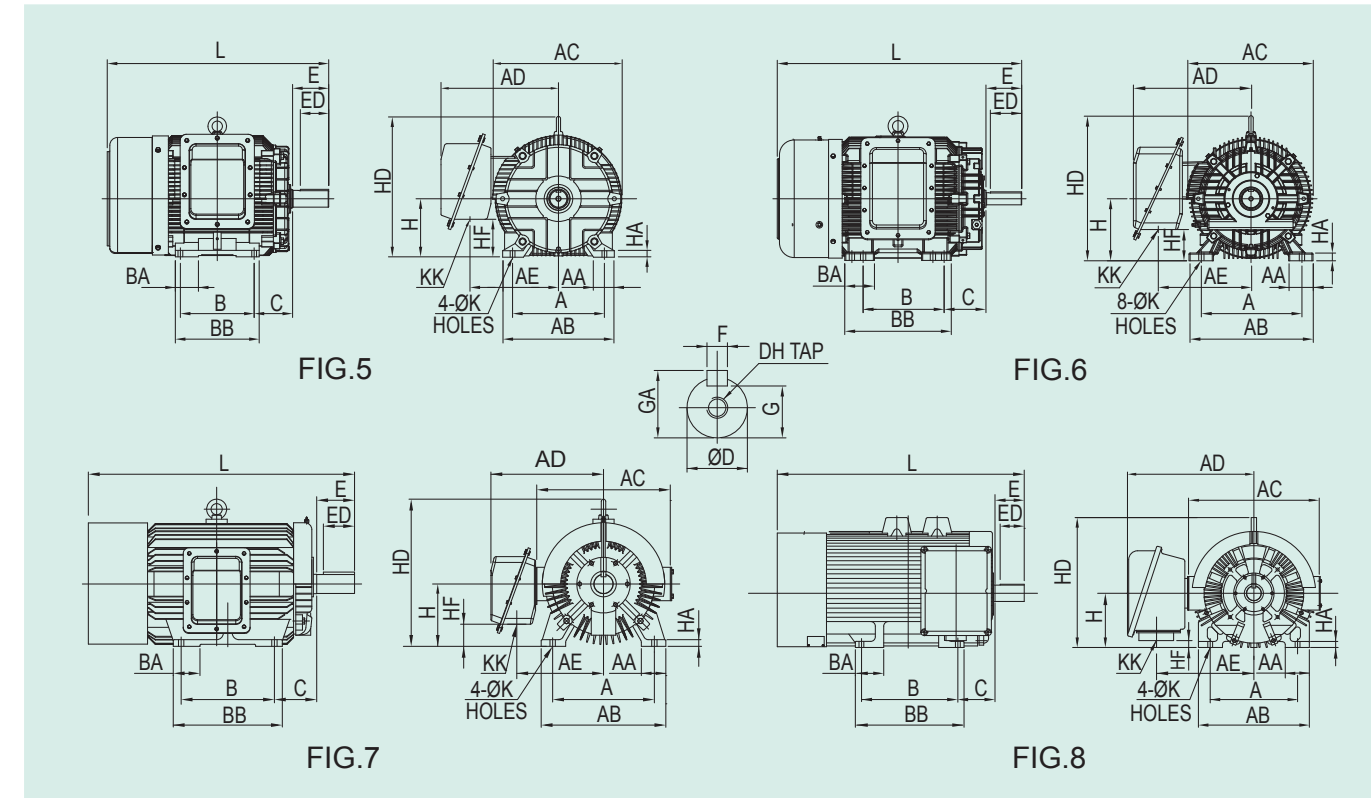


尺寸 DIMENSION (mm)

| 框號 FRAME NO. | 輸出 OUTPUT (kW) | | | 圖 FIG. | 安裝尺寸 MOUNTING DIMENSION | | | | | | | | | | |
|-----------------|-------------------|---------|---------|-----------|----------------------------|-----|-----|------|-----|-----|-----|-----|-----|------|-----|
| | 2P | 4P | 6P | | AA | AB | AC | AD | AE | BA | BB | | | | |
| | | | | | | | | | | | | A | B | C | K |
| 80M | 0.75 | 0.75 | — | 1 | 125 | 100 | 50 | 10 | 35 | 155 | 180 | 146 | 118 | — | 130 |
| 90L | 1.5,2.2 | 1.5 | 0.75 | | 140 | 125 | 56 | 10 | 40 | 176 | 207 | 164 | 134 | — | 149 |
| 100L | — | 2.2 | — | 2 | 160 | 140 | 63 | 12 | 40 | 196 | 223 | 183 | 155 | — | 176 |
| 112M | 3.7 | 3.7 | 1.5,2.2 | | 190 | 140 | 70 | 12 | 40 | 220 | 243 | 183 | 155 | — | 168 |
| 132S | 5.5,7.5 | 5.5 | 3.7 | 3 | 216 | 140 | 89 | 12 | 50 | 260 | 285 | 225 | 179 | — | 175 |
| 132M | — | 7.5 | 5.5 | | 216 | 178 | 89 | 12 | 50 | 260 | 285 | 225 | 179 | — | 213 |
| 160M | 11,15 | 11 | 7.5 | 4 | 254 | 210 | 108 | 14.5 | 60 | 308 | 324 | 275 | 230 | — | 250 |
| 160L | 18.5 | 15 | 11 | | 254 | 254 | 108 | 14.5 | 60 | 308 | 324 | 275 | 230 | — | 294 |
| 180M | 22 | 18.5,22 | 15 | 5 | 279 | 241 | 121 | 14.5 | 60 | 324 | 398 | 340 | 275 | 82.5 | 286 |
| 180L | 30 | — | — | | 279 | 279 | 121 | 14.5 | 60 | 324 | 398 | 340 | 275 | 82.5 | 324 |
| 200L | 37,45 | — | — | 6 | 318 | 305 | 133 | 18.5 | 80 | 378 | 442 | 353 | 305 | 80 | 360 |
| 225S | 55 | — | — | | 356 | 286 | 149 | 18.5 | 80 | 430 | 490 | 432 | 345 | 89.5 | 325 |
| 250S | 75 | — | — | 7 | 406 | 311 | 168 | 24 | 90 | 490 | 500 | 512 | 394 | 111 | 412 |
| 250M | 90 | — | — | | 406 | 349 | 168 | 24 | 90 | 490 | 500 | 512 | 394 | 111 | 412 |
| 280S | 110 | — | — | 8 | 457 | 368 | 190 | 24 | 110 | 560 | 560 | 540 | 424 | 135 | 484 |
| 280M | 132 | — | — | | 457 | 419 | 190 | 24 | 110 | 560 | 560 | 540 | 424 | 185 | 584 |
| 315S | 150 | — | — | 9 | 508 | 406 | 216 | 28 | 140 | 630 | 680 | 580 | 455 | 120 | 480 |
| 315M | 185 | — | — | | 508 | 457 | 216 | 28 | 140 | 630 | 680 | 580 | 455 | 120 | 530 |
| 315MF | — | — | 150 | 10 | 508 | 457 | 216 | 28 | 140 | 630 | 760 | 735 | 566 | 165 | 632 |
| 315LS | 200 | — | — | | 508 | 560 | 216 | 28 | 140 | 630 | 760 | 735 | 566 | 165 | 632 |
| 315LL | — | — | 200 | 508 | 710 | 216 | 28 | 140 | 630 | 760 | 735 | 566 | 176 | 782 | |

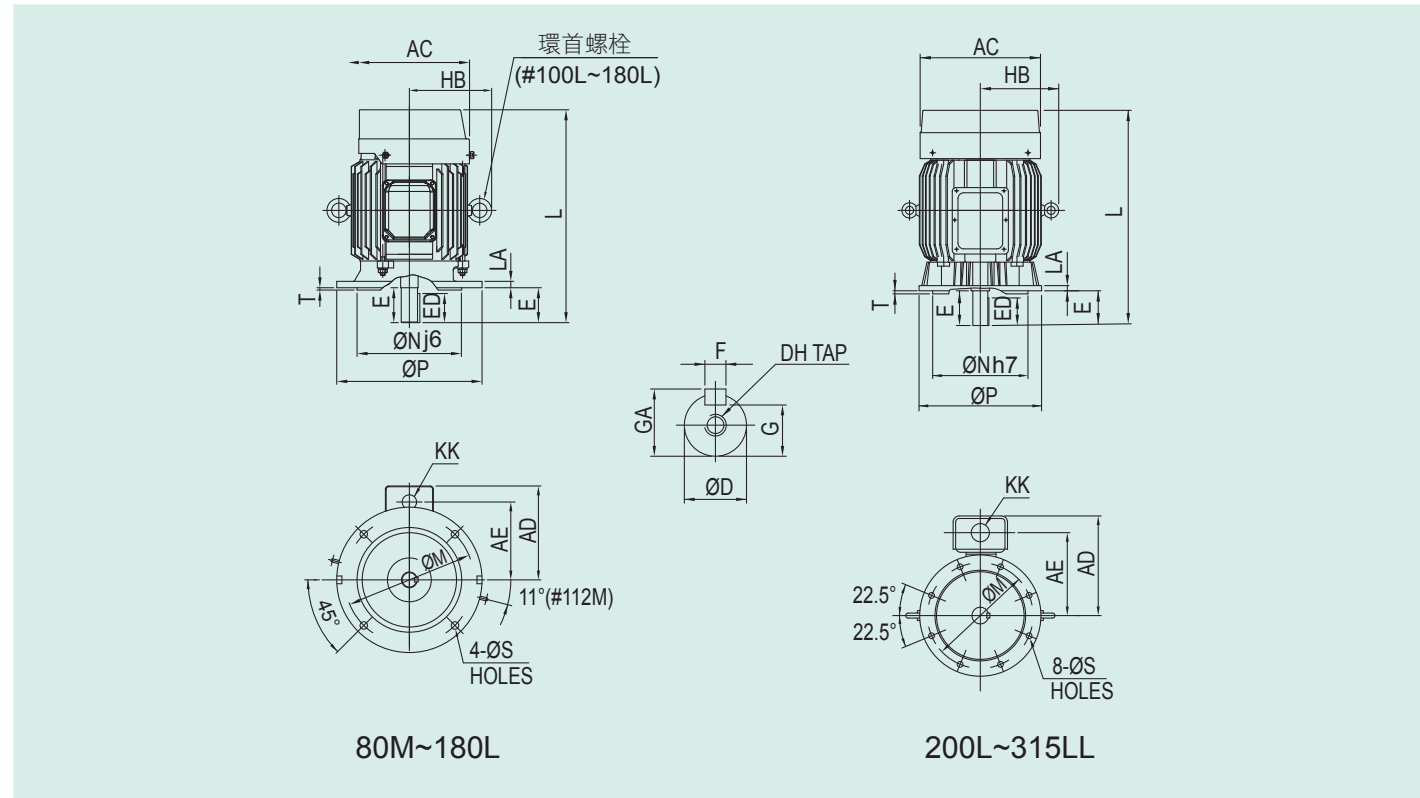
註： 1. 中心高 "H" 尺寸的公差：80M ~ 250M +0, -0.5；280S ~ 315LL +0, -1。
 2. 軸徑 "D" 尺寸的公差：框號 80M ~ 112M 為 j6；框號 132S ~ 180M 為 k6；框號 180L ~ 315LL 為 m6。
 3. 2 極馬達限用直結式連結，皮帶式連結請告知皮帶輪尺寸等細節（框號 225S 以上）。
 ※ 內容若有變更，恕不另行通知。

IE3 系列外形尺寸圖
立式全密閉外扇型 VERTICAL TOTALLY-ENCLOSED FAN-COOLED



| H | HA | HD | HF | KK | L | 軸端 SHAFT END | | | | | | 軸承 BEARING | | 略重 APPROX. WT. (kg) | 框號 FRAME NO. | |
|-----|----|-----|-----|------|-------|--------------|-----|-----|----|------|------|------------|----------|---------------------------|-----------------|-------|
| | | | | | | D | E | ED | F | G | GA | DH | L.S. | | | O.S. |
| | | | | | | | | | | | | | | | | |
| 80 | 8 | 169 | 35 | Ø22 | 274 | 19 | 40 | 30 | 6 | 15.5 | 21.5 | M6×12L | 6204ZZ | 6204ZZ | 16 | 80M |
| 90 | 10 | 190 | 45 | Ø22 | 327 | 24 | 50 | 40 | 8 | 20 | 27 | M8×20L | 6205ZZ | 6205ZZ | 26 | 90L |
| 100 | 12 | 246 | 85 | Ø28 | 378 | 28 | 60 | 50 | 8 | 24 | 31 | M10×25L | 6206ZZ | 6206ZZ | 38 | 100L |
| 112 | 12 | 274 | 95 | Ø28 | 382 | 28 | 60 | 50 | 8 | 24 | 31 | M10×25L | 6207ZZ | 6206ZZ | 44 | 112M |
| 132 | 15 | 316 | 112 | Ø35 | 450 | 38 | 80 | 65 | 10 | 33 | 41 | M12×25L | 6308ZZ | 6208ZZ | 70 | 132S |
| 132 | 15 | 316 | 112 | Ø35 | 488 | 38 | 80 | 65 | 10 | 33 | 41 | M12×25L | 6308ZZ | 6208ZZ | 85 | 132M |
| 160 | 18 | 373 | 120 | Ø52 | 603 | 42 | 110 | 90 | 12 | 37 | 45 | M16×36L | 6310ZZ | 6208ZZ | 130 | 160M |
| 160 | 18 | 373 | 120 | Ø52 | 647 | 42 | 110 | 90 | 12 | 37 | 45 | M16×36L | 6310ZZ | 6208ZZ | 142 | 160L |
| 180 | 20 | 440 | 105 | Ø63 | 676.5 | 48 | 110 | 90 | 14 | 42.5 | 51.5 | M16×36L | 6310ZZ | 6210ZZ | 190 | 180M |
| 180 | 20 | 440 | 105 | Ø63 | 714.5 | 55 | 110 | 90 | 16 | 49 | 59 | M20×42L | 6312ZZC3 | 6212ZZC3 | 220 | 180L |
| 200 | 20 | 486 | 130 | Ø63 | 772.5 | 55 | 110 | 90 | 16 | 49 | 59 | M20×42L | 6312ZZ | 6212ZZ | 225 | 200L |
| 225 | 25 | 541 | 145 | Ø91 | 802.5 | 60 | 140 | 110 | 18 | 53 | 64 | M20×42L | 6312ZZC3 | 6212ZZC3 | 300 | 225S |
| 250 | 35 | 574 | 102 | Ø118 | 829 | 55 | 110 | 90 | 16 | 49 | 59 | M20×42L | 6314ZZC3 | 6312ZZC3 | 370 | 250S |
| 250 | 35 | 574 | 102 | Ø118 | 859 | 65 | 140 | 110 | 18 | 58 | 69 | M20×42L | 6314ZZC3 | 6312ZZC3 | 380 | 250M |
| 280 | 35 | 655 | 141 | Ø118 | 912 | 55 | 110 | 90 | 16 | 49 | 59 | — | 6316ZC3 | 6316ZC3 | 495 | 280S |
| 280 | 35 | 655 | 141 | Ø118 | 942 | 75 | 140 | 110 | 20 | 67.5 | 79.5 | — | 6316ZC3 | 6316ZC3 | 535 | 280M |
| 315 | 35 | 767 | 95 | Ø118 | 912 | 55 | 110 | 90 | 16 | 49 | 59 | — | 6316ZC3 | 6316ZC3 | 544 | 315S |
| 315 | 35 | 767 | 95 | Ø118 | 942 | 75 | 140 | 110 | 20 | 67.5 | 79.5 | — | 6316ZC3 | 6316ZC3 | 562 | 315M |
| 315 | 35 | 767 | 95 | Ø118 | 1058 | 55 | 110 | 90 | 16 | 49 | 59 | — | 6316ZC3 | 6316ZC3 | 670 | 315L |
| 315 | 35 | 767 | 95 | Ø118 | 1118 | 85 | 170 | 140 | 22 | 76 | 90 | — | 6318ZC3 | 6316ZC3 | 780 | 315LL |
| 315 | 35 | 767 | 95 | Ø118 | 1158 | 55 | 110 | 90 | 16 | 49 | 59 | — | 6316ZC3 | 6316ZC3 | 850 | 315LL |
| 315 | 35 | 767 | 95 | Ø118 | 1218 | 85 | 170 | 140 | 22 | 76 | 90 | — | 6318ZC3 | 6316ZC3 | 890 | 315LL |
| 315 | 35 | 767 | 95 | Ø118 | 1166 | 55 | 110 | 90 | 16 | 49 | 59 | — | 6313C3 | 6313C3 | 1160 | 315S |
| 315 | 35 | 767 | 95 | Ø118 | 1307 | 95 | 170 | 140 | 25 | 86 | 100 | — | 6320 | 6318 | 1130 | 315M |
| 315 | 35 | 767 | 95 | Ø118 | 1218 | 55 | 110 | 90 | 16 | 49 | 59 | — | 6313C3 | 6313C3 | 1170 | 315L |
| 315 | 35 | 767 | 95 | Ø118 | 1358 | 95 | 170 | 140 | 25 | 86 | 100 | — | 6320 | 6318 | 1170 | 315LL |
| 315 | 35 | 755 | 40 | PF4" | 1380 | 95 | 170 | 140 | 25 | 86 | 100 | — | 6320 | 6318 | 1390 | 315MF |
| 315 | 35 | 755 | 40 | PF4" | 1350 | 55 | 110 | 90 | 16 | 49 | 59 | — | 6314C3 | 6313C3 | 1670 | 315LS |
| 315 | 35 | 755 | 40 | PF4" | 1380 | 95 | 170 | 140 | 25 | 86 | 100 | — | 6320 | 6318 | 1670 | 315LL |
| 315 | 35 | 755 | 40 | PF4" | 1575 | 95 | 170 | 140 | 25 | 86 | 100 | — | 6320 | 6318 | 1950 | 315LL |

註： 1. 公差尺寸 "H"：80M ~ 250M +0, -0.5；280S ~ 315LL +0, -1。
 2. 公差尺寸 "D"：j6，for frame 80M ~ 112M；k6，for frame 132S ~ 180M；m6，for frame 180L ~ 315LL。
 3. 2 極馬達限用直結式連結，皮帶式連結請告知皮帶輪尺寸等細節（框號 225S 以上）。
 ※ 內容若有變更，恕不另行通知。



| 框號 FRAME NO. | 輸出 OUTPUT (kW) | | | 圖 FIG. | 安裝尺寸 MOUNTING DIMENSION | | | | | | | | 軸端 SHAFT END | | | | | | | | | | | | | |
|-----------------|-------------------|---------|---------|-----------|----------------------------|-----|-----|------|----|-----|-----|-----|--------------|------|-----|----|-----|----|------|------|---------------------------|-----------------|--------|--------|-----|------|
| | 2P | 4P | 6P | | AA | AB | AC | AD | AE | BA | BB | D | E | ED | F | G | GA | DH | L.S. | O.S. | 略重 APPROX. WT. (kg) | 框號 FRAME NO. | | | | |
| | | | | | | | | | | | | | | | | | | | | | | | A | B | C | K |
| 80M | 0.75 | 0.75 | — | 1 | 125 | 100 | 50 | 10 | 35 | 155 | 180 | 146 | 118 | — | 130 | 19 | 40 | 30 | 6 | 15.5 | 21.5 | M6×12L | 6204ZZ | 6204ZZ | 16 | 80M |
| 90L | 1.5 | 1.5 | 0.75 | | 140 | 125 | 56 | 10 | 40 | 176 | 207 | 164 | 134 | — | 149 | 24 | 50 | 40 | 8 | 20 | 27 | M8×20L | 6205ZZ | 6205ZZ | 26 | 90L |
| 100L | — | 2.2 | — | 2 | 160 | 140 | 63 | 12 | 40 | 196 | 223 | 183 | 155 | — | 176 | 28 | 60 | 50 | 8 | 24 | 31 | M10×25L | 6206ZZ | 6206ZZ | 38 | 100L |
| 112M | 3.7 | 3.7 | 1.5,2.2 | | 190 | 140 | 70 | 12 | 40 | 220 | 243 | 183 | 155 | — | 168 | 28 | 60 | 50 | 8 | 24 | 31 | M10×25L | 6207ZZ | 6206ZZ | 44 | 112M |
| 132S | 5.5,7.5 | 5.5 | 3.7 | 3 | 216 | 140 | 89 | 12 | 50 | 260 | 285 | 225 | 179 | — | 175 | 38 | 80 | 65 | 10 | 33 | 41 | M12×25L | 6308ZZ | 6208ZZ | 70 | 132S |
| 132M | — | 7.5 | 5.5 | | 216 | 178 | 89 | 12 | 50 | 260 | 285 | 225 | 179 | — | 213 | 38 | 80 | 65 | 10 | 33 | 41 | M12×25L | 6308ZZ | 6208ZZ | 85 | 132M |
| 160M | 11,15 | 11 | 7.5 | 4 | 254 | 210 | 108 | 14.5 | 60 | 308 | 324 | 275 | 230 | — | 250 | 42 | 110 | 90 | 12 | 37 | 45 | M16×36L | 6310ZZ | 6208ZZ | 130 | 160M |
| 160L | 18.5 | 15 | 11 | | 254 | 254 | 108 | 14.5 | 60 | 308 | 324 | 275 | 230 | — | 294 | 42 | 110 | 90 | 12 | 37 | 45 | M16×36L | 6310ZZ | 6208ZZ | 142 | 160L |
| 180M | 22 | 18.5,22 | 15 | 5 | 279 | 241 | 121 | 14.5 | 60 | 324 | 398 | 340 | 275 | 82.5 | 286 | 48 | 110 | 90 | 14 | 42.5 | 51.5 | | | | | |